

VULCASEAL[®]

V225



PERMANENT WATER REPELLENT PROTECTION FOR USE ON INTERIOR OR EXTERIOR TILES, STONE AND CONCRETE. CREATES A BREATHABLE BARRIER AGAINST ALL TYPES OF STAINING AND POLLUTIVE DIRT.

PRODUCT DESCRIPTION

Vulcaseal V225 is a highly proficient and permanent water repellency protection for porous building surfaces as used in roof, wall or ground surface construction.

Vulcaseal V225 is an impregnating surface treatment that is able to pass the 48 hour water immersion test (procedure reference: JC/T902-2002 and JC/T973-2005).

It has therefore excellent hydrophobic / waterproofing properties but also additional resistance to abrasion properties.

Vulcaseal V225 is an environmentally friendly waterborne product, (non-toxic and solvent free) designed to protect all porous materials against water and oil penetration, all kinds of staining.

CHARACTERISTICS

Prevents the penetration of oil and water ingress

Effective protection for 10+ years

Non-hazardous and non-toxic

APPLICATION

A trial should always first be tested on a small area to confirm the products suitability for the surface being treated.

Vulcaseal V225 is a waterborne chlorophyllane solution.

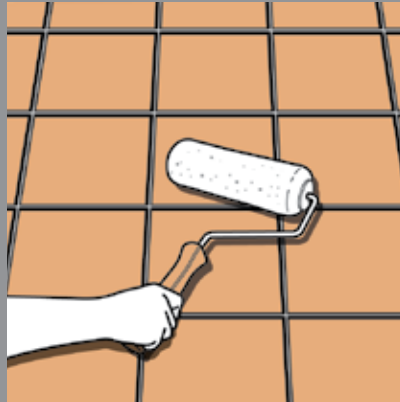
VULCASEAL[®]

V225

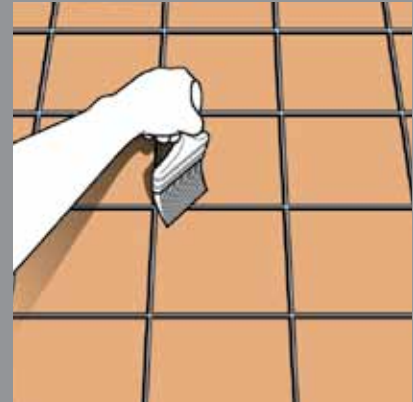
**STEP 1**

Use the product neat, do not dilute or mix with another product.

Do not forget to shake the container before application.

**STEP 2**

Apply the product with either a roller (1 to 2 crossed applications without over applying).

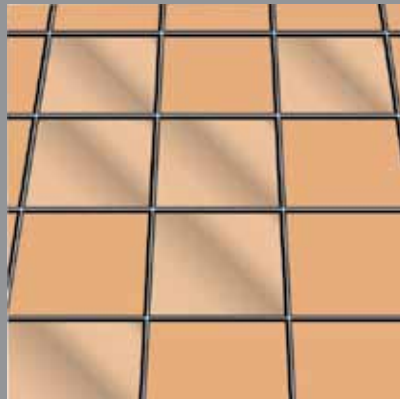
**STEP 2**

Or apply the product with a brush (1 to 2 crossed applications without over applying. In the event of brush strokes homogenize with a roller).

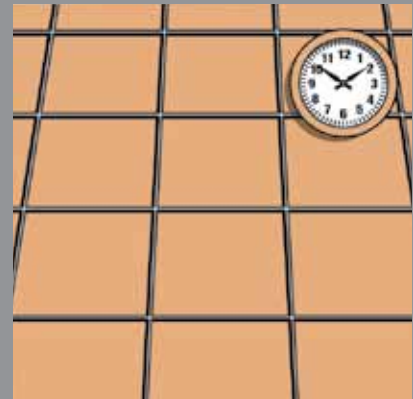
**STEP 2**

Or apply the product with a low pressure spray (2 crossed applications).

Vertical surfaces, apply from the bottom up

**STEP 3**

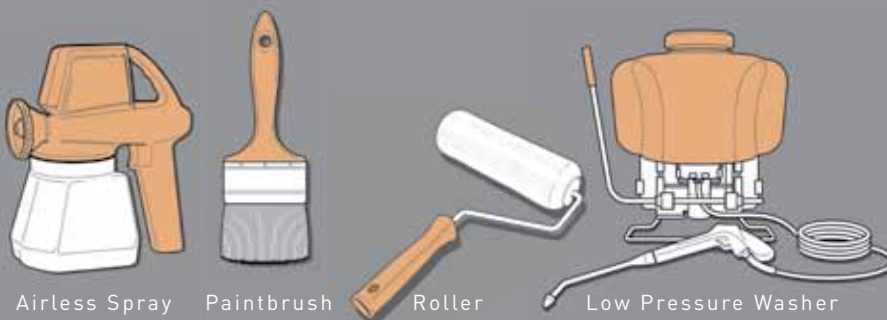
Make sure the product is applied to saturation point either in one application or in two applications 'wet-on-wet'.

**STEP 4**

Allow the surface to dry for 24 hours. Protect the surface for 24 hours from rain and dust. For optimum performance wait 5 to 7 days.

TOOLS REQUIRED

Either:



Airless Spray

Paintbrush

Roller

Low Pressure Washer

COVERAGE

Coverage depends on the material's porosity. These figures are approximate and should be used as a guideline:

1 Litre = 6 to 12m².

STORAGE

Lifespan: 2 years. Keep in a cool, dry place, away from extreme cold. Do not store in condition below 5°C.