



# Quantum

PRODUCT FOCUS

LEVTEC

## LevTec Tile Levelling System

The patented LevTec levelling system is designed to create flawless tiling projects, with perfectly level surfaces and consistent grout joints.



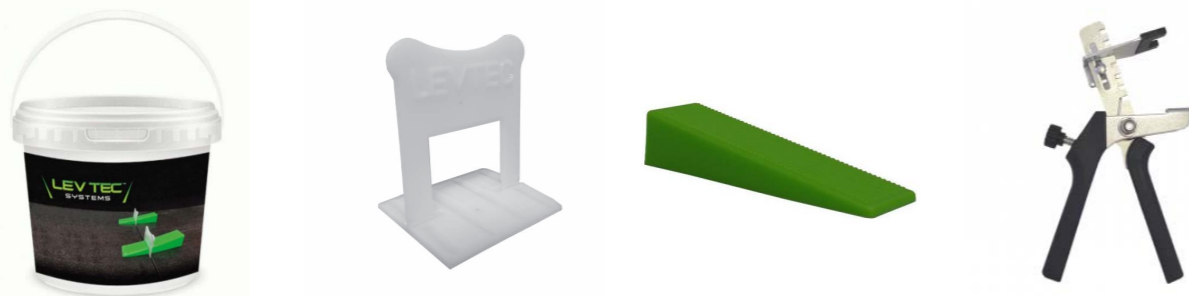
### THERE IS NO SIMPLER WAY TO ENSURE PERFECT TILING

The range includes clips, wedges and pliers which lock tiles in place to prevent slumping during drying, while also removing substrate imperfections. Their interlocking design holds the tiles together, while eliminating the effects of adhesive shrinkage and gravity issues. This unique system will enable professional tilers to set floor and wall tiles without lippage until the adhesive is fully dry.

The clips are simple and quick to use thanks to their bevelled clip edges, with a strong and flexible design which does not suffer from accidental breakages. Unlike other clip and wedge-based levelling systems, the breakpoint is below the base plate, allowing total expansion once removed. In addition, the reinforced reusable wedges are designed to provide complete accuracy, so every tiling project benefits from a faultless surface.

Designed for tiles with a thickness between 3 and 12mm - 1.5mm tile spacer.

The LevTec system creates a faultless tiled job every time.



PATENTED LEVTEC "FLEX BARS" OFFER A CONSTANT DOWNWARD FORCE CLAMPING TILES TIGHTER THAN OTHER SYSTEMS WHILE STILL BEING THE EASIEST PRODUCT TO USE.

SIDE LUGS TO DISPERSE FORCE & EASY REMOVAL

REINFORCED & REUSABLE DESIGN

BREAKPOINT BELOW TILE SURFACE

BEVELED EDGE FOR EASY PLACEMENT

RIDGED DESIGN LOCKS TILES IN PLACE

## BENEFITS

- ✓ **PERFECT FINISH**  
QUICKLY AND EASILY CREATE A FLAWLESS TILED FINISH EVERYTIME
- ✓ **ELIMINATE LIPPAGE**  
HOLD THE TILES IN PLACE WITHOUT LIPPAGE UNTIL THE ADHESIVE DRIES
- ✓ **EFFICIENT**  
THIS QUICK SYSTEM WILL SPEED UP THE TILE INSTALLATION PROCESS
- ✓ **PREVENT SLUMPING**  
LOCKING THE TILES IN PLACE WILL PREVENT SLUMPING WHILST THE ADHESIVE DRIES
- ✓ **EASY TO USE**  
THE SYSTEM IS VERY EASY TO USE AND REMOVE

## HOW TO CREATE A PERFECT FINISH

### Step 1

Spread the tile adhesive and lay the tile, then position the LevTec clips beneath the edge of the tile. The clip will act as 1.5mm spacer when pressed firmly against the tile.

### Step 2

Set the adjacent tile firmly into the adhesive, butted against the LevTec clip. Then slide the LevTec wedge through the clip until both tiles are firmly levelled.

### Step 3

Once the tiles are locked in place, the clips and wedges need to stay in position until the adhesive sets. The joint width can be adjusted slightly during setting, without disrupting the height of the tiles.

### Step 4

Once the adhesive is set the wedges can be removed using a rubber mallet. The clips should be hit in the direction of the tile joint, where they will dislodge from the breakpoint below the tile ready for grouting.



**4 Courtauld Way,  
Campsie, L'Derry  
N. Ireland, BT47 3DN**

Target House,  
Ruthvenfield Road, Perth  
Scotland, PH1 3EE

**[info@quantumgroupni.com](mailto:info@quantumgroupni.com)**

**+44 (0)28 7131 2064**

**[quantumgroupni.com](http://quantumgroupni.com)**

